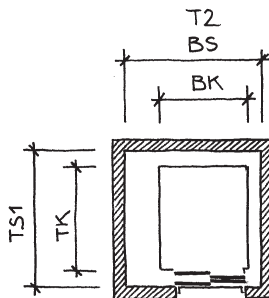


Indicazioni per la progettazione

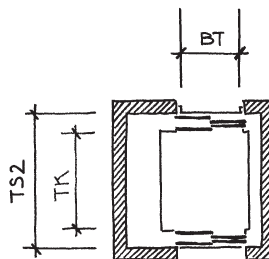
**Pianta del vano**

**Tipo di porta**

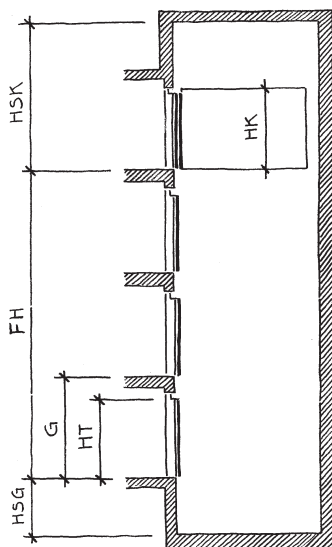
Accessi unilaterali



Accessi contrapposti

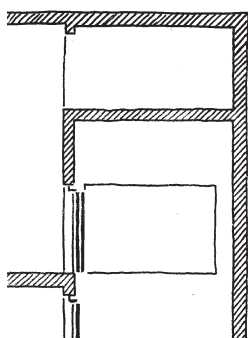


**Sezione del vano**

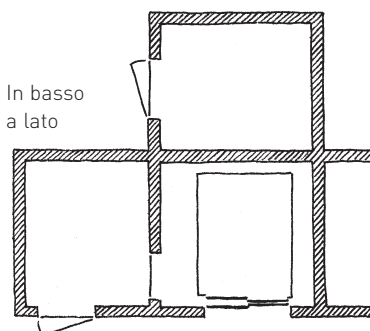


**Ubicazione del locale macchine**

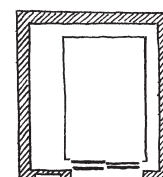
In alto



In basso dietro



Senza locale



In basso a lato

Quadro di comando

HSK = Altezza testata  
FH = Corsa  
HSG = Profondità fossa

Altre abbreviazioni: v. Panoramica dei tipi di ascensore